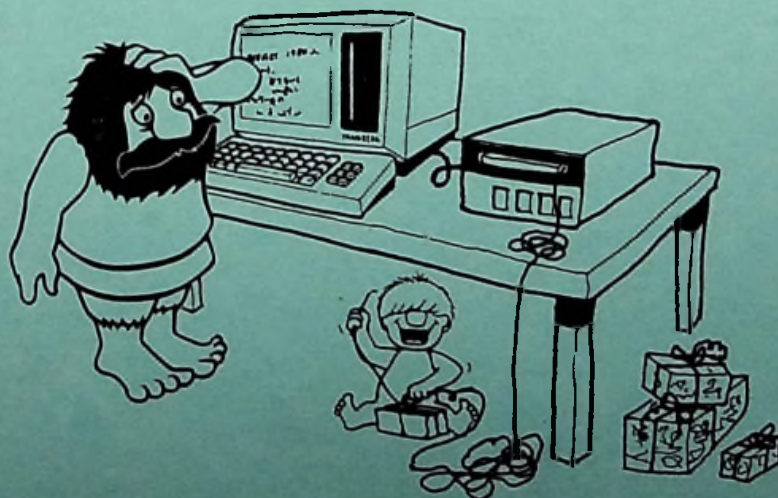


- \* A NOTE FROM OUR MANAGING DIRECTOR
- \* CHANGES IN OUR ORGANIZATION
- \* NEW FACES AT DATA SERVICE
- \* SPARE BOARDS PRICE LIST
- \* HARDWARE TRAINING COURSES
- \* NEW PUBLICATIONS FROM DIG



# newsletter

## Contents

---

A Note from our Managing Director .....	1
Changes in our Organization .....	2
New Faces at Data Service .....	3
Software Updating .....	4
ECN Status List .....	5
New Publications from DIG .....	5
Hardware Training Courses .....	6
Spare Boards Price List .....	6
List of Representatives .....	8
List of Documentation .....	9

## Newsletter deadlines

---

We strongly encourage our readers to make use of the Newsletter to spread information which might be of interest to others.

Please notice however, that the next deadline is:

March 1st

A note from

TO OUR CONNEC

Handberg Data background with consequence of filled period

The parties to employees, customer or less uncertainty a

The background different, but vitality, and

Towards the end through the market without exception profit in the capital invest

However, the products developed competition in profitability marketing the

The Development reinforced in

The company has product exhibition and new version plans for the new products.

Now, towards connections for Without this carry on the show that it tations place

Kjelsås, 10.1

Ralph Høibakk  
Managing Director

# A note from our Managing Director

## TO OUR CONNECTIONS

Tandberg Data A/S was established as a company on April 1st 1979. The background will be known to our connections. It happened as a consequence of extraordinary events and after a long and problem filled period.

The parties that Tandberg Data A/S sought connection with, owners, employees, customers, suppliers and financial sources, made themselves more or less dependant on the company and exposed themselves to uncertainty and risk with their engagement.

The background and motives for the ties with Tandberg Data A/S were different, but one thing common was expectations about the company's vitality, and the confidence that the other parties would stand by.

Towards the end of 1979 we can state that Tandberg Data A/S is well through the most critical phase. The company's connections stood by without exception. We can now report that the company has turned a profit in the period from 1.4.79 to 1.10.79. This means that with the capital invested, the company is well equipped to meet the future.

However, the future will not be without problems. The field of data products develops rapidly, there is much demand for renewal and the competition in the field is fierce. Subordinate the demand for profitability, Tandberg Data A/S has given product development and marketing the highest priority.

The Development department and the Marketing department have been reinforced in 1979 and will be additionally expanded in 1980.

The company has been represented at the most important international product exhibitions during the year and has introduced new products and new versions of already existing ones. Ambitious but realistic plans for the near future are made for development and introduction of new products.

Now, towards the end of 1979, Tandberg Data A/S wishes to thank its connections for standing the company by during the critical period. Without this support and confidence it would have been impossible to carry on the activities. The company will continue its endeavours to show that it is worthy of the confidence and to redeem the expectations placed upon it.

Kjelsås, 10.12.79

*Ralph Høibakk*

Ralph Høibakk  
Managing Director

# anges in our organization

## SYSTEM SUPPORT GROUP ESTABLISHED

announced in the previous Newsletter our Marketing functions have been considerably strengthened. A further move in this direction is the establishment of a System Support group. This group reports directly to our Marketing Manager, Mr. Hans Lødrup.

Mr. Kjell Myhre is appointed head of this group. He and Mr. Bjørn Ahlgren have been transferred from the Development Department where they had similar duties. The group will be expanded with additional personnel.

This change in organization is done to emphasize our dedication to this business and thus be able to support our customers in a much better way than previously.

System Support will be responsible for all current and new system oriented products such as on-line clusters and batch emulators.

These products include TD model numbers:

- TDS 8010 On-Line Clusters  
(IBM 3270, Honeywell VIP 7700, Honeywell BTH)
- TDS 802x Batch emulators and Data entry  
(IBM HASP, GRTS 115, IBM 3741)
- TDS 803x On-Line Clusters (IBM 3270, HW VIP 7700 etc.)

The group will have responsibility towards our customers with respect to:

- Identification of customer requirements together with our Sales organization
- Take-over of project responsibility from the Development Department or outside consultant
- System installation
- System maintenance including software modifications and corrections

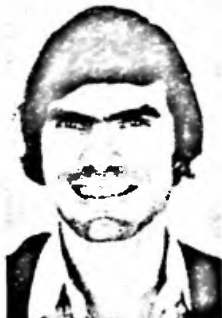
Petter Brevik  
Development Manager

# New faces at Data Service

---

R U N E   O L A F S E N

Rune Olafsen has been in the Data Division at the previous Tandberg Radiofabrikk since the beginning in 1970. He is now joining the Data Service in December after testing and repairing the TDV 2100 products in Production for the last couple of years.



F R A N K   J O H A N S S O N



Frank Johansson joined the Data Service Group in August this year. He will particularly be working with TDV 2114.

Johansson had just finished his education as an engineer when he came to Tandberg Data.

K A R L - G U S T A V   L A R S E N

Karl-Gustav Larsen, previously presented in Newsletter number 2 volume 1, was promoted to Group Leader of the Data Service group earlier this year.



Rolf Holt-Jacobsen

# Software updating

## TDS 8031 (IBM 3270 EMULATOR) REVISION LEVEL 3

In addition to known errors, the following changes have been made:

- Insert/delete is now IBM-compatible
- Transmission Master/Slave is converted from 8 to 7 bits.
- It is possible to configurate form feed after hard copy (except COPY 0 where PA F may be used).
- It is possible to configurate terminal status to be reset either on SEND or when RVI is received from host.
- Improved handling of status messages to host when printer is busy or out of service.
- Switched/dedicated line as configuration parameter. (If switched is configurated, the terminal will "hang up" if there has been no activity on the line in 25 seconds).

Kjell Myhre

## TDS 8021/8024 (HASP/JES2 EMULATOR) REVISION LEVEL 2

In addition to known errors, the following changes have been made:

- It is possible to set printer-connection to automatic. (Print-output from host will automatically be printed without intervention from the operator).
- It is possible to simulate a printer carriage-tape. This makes it possible for the users to utilize the "skip to channel" feature.
- It is possible to inspect/change a dataset label.

Kjell Myhre

## ECN status list

TDC 3000: 3001 - 3032  
TDV 2100: 2001 - 2153  
TDM 1000: 1 - 15 - 1002  
TDF 4000: 4001 - 4002

## New publications from DIG

The following list shows new or revised publications that have been printed since the previous issue of Newsletter.

They can all be obtained from our Ordering Department.



<u>PUBL. REV.</u>				<u>PART</u>	
<u>NO.</u>	<u>NO.</u>	<u>TITLE</u>		<u>NUMBER</u>	<u>CODE</u>
P1552	1	TDC 3000 PARALLEL I/O CONTROLLER (960056)		--	*
P5040	1	TDC 3011 USER & SERVICE MAN. (HP2100/21MX)		374719	*
P5125	0	TDC 3025 USER MANUAL, VERSION 2k (TDI)		389683	*
P5122	0	TDV 2100 SHUGART DISK.DRIVE MAINT. MANUAL		386989	*
P5035	1	TDV 2114 INSTALLATION		366330	*
N5108	0	TDV 2114 PROGRAMMER'S REFERENCE GUIDE		--	*
P5097	1	TDV 2114 REF.MANUAL DOUBLE DENSITY MARK I		--	*

# Hardware training courses

This autumn we arranged service training courses on our products. As the courses were partly overbooked a long-felt need was obviously satisfied. However, if you still need more training, please let us know and we will try to arrange new courses in the first quarter of 1980.

We plan to improve our course activities, but we need some time to get them into operation. In the meantime we will still arrange courses upon request.

Rolf Holt-Jacobsen

## Spare boards price list

We are now distributing a price list for spare boards and units for TDV 2114/15/16. The prices, in Norwegian kroner f.o.b. Oslo, are in most cases lower than earlier. In those few cases where the boards have been improved, the price is higher.

In the price list you will find that some boards have no "new price" indicated. This means that those boards can no longer be delivered.

Under "remarks" you will find the ordering number for replacement boards.

All boards with PROMs (firmware, character generator, etc.), with exception of 960320 and 960321, are delivered without the PROMs. Due to the wide selection of different PROMs, orders have to be made separately.

Delivery of small quantities are made from stock and takes normally less than two weeks. Orders of 10 pieces or more with the same ordering number will be handled as a service/production order with a delivery time of 20 weeks. A 10% deduction will be given on these orders.

Emergency deliveries of single boards/units can be made. The order will be shipped within maximum 24 hours on weekdays only. The handling charge for this special service is NKR 500,-.

A handling charge of NKR 70,- is added on orders totalling a sum less than NKR 1000,-. All spare part orders will be shipped the fastest possible way (usually airfreight) unless otherwise specified on the order.

Please make sure to specify the ordering number of the board or unit.



## Repair of boards and units

We repair all boards and units which have an "exchange price" in the price list. Boards sent us for repair must not be physically damaged or changed in any way. Necessary updating will be done along with the repairs, and is included in the fixed exchange price.

Repair on an "hour charge basis" can be requested only if a large amount of identical boards are sent for repair at the same time.

Boards equipped with PROMs often have failures in the PROM circuits or in connection with the PROMs. We therefore advice you to send us the boards with PROMs in place. We give 3 months warranty on repairs.

An illustrated part list on the TDV 2114 has been distributed. A similar list on the TDV 2115/16 is in preparation and expected to be distributed during the 1st quarter of 1980.

Components which are used commonly, are often easier and cheaper bought locally.

Components and parts which are not available locally can be ordered from us.

Please specify the indicated ordering number. If this cannot be found, please supply us with a specific description of the part and mounting place.

Rolf Holt-Jacobsen



Updated 10th Dec. 1979

**NORWAY**

Mr. Kjell Sørbye  
Computer Systemer A/S  
P.O. Box 2380  
5012 SOLHEIMSVIK  
Oalgst. 11  
4300 SANDNES

Telephone:  
(47-5) 298027

Telephone:  
(47-45) 66924

**NORWAY**

Mr. Trond Andersen  
Morgenstjerne & Co. A/S  
(only TDC 3000)  
P.O. Box 6688, Rodeløkka  
OSLO 5

Telephone:  
(47-2) 356110

Telex:  
11719

**NORWAY**

Mr. Finn Radmann  
Mr. Arild Gladsee  
Stål & Still A/S, F. Radmann  
Fjordgt. 46/48  
7000 TRONDHEIM

Telephone:  
(47-75) 33060

**NORWAY**

Mr. J. E. Danielsen  
Stål & Still A/S, E. Danielsen  
Farmannsgate 6  
1600 FREDRIKSTAD

Telephone:  
(47-32) 17731

**NORWAY**

Mr. Arne Heen  
Mr. Pål Kjersem  
Norske Data Systemer A/S  
Kirkegaten 34  
OSLO 1

Telephone:  
(47-2) 421670

**ENGLAND**

Mr. Ron Fairbairn  
Mr. Peter Gravestock  
Farnell Int. Instr. Ltd.  
Sandbeck Way  
Wetherby  
West Yorksh. LS22 4DH

Telephone:  
(44) 937-63541

Telex:  
951/557294

**AUSTRIA**

Mr. Ulrich Bock  
Siemens Data Ges.m.b.H.  
Hollandstrasse 2  
1020 WIEN

Telephone:  
(43-222) 241508

Telex:  
928/76766

**SWITZERLAND**

Mr. Werner Stolz  
Mr. Anton Wegdam  
Mr. Bachman  
Stolz AG  
Industrievertretungen  
8968 MUTSCHELLEN

Telephone:  
(41-57) 54655

Telex:  
935/54070

**List of representatives**

**WEST-GERMANY**

Mr. Dietmar Wasenitz  
Mr. Harry Heide  
Video Data Systems G.m.b.H.  
6454 BRUCHKOBEL  
Im Niederried 3

Telephone:  
(49-61) 817-7051

Telex:  
923/4182023

**DENMARK**

Mr. Svend Elverø  
A/S Danbridge  
5, Hirsensmarken  
3520 FARUM

Telephone:  
(45-2) 955522

Telex:  
955/37579

**DENMARK**

Mr. F. Stubkjær Jensen  
Mr. Jesper Larsen  
DI-Datanet A/S  
(Word Processing)  
Sindalsvej 9-13  
8240 RISSKOV

Telephone:  
(45-6) 212000

Telex:  
955/64496

**NETHERLANDS**

Mr. Lox den Holder  
Technation N.V.  
Building 106  
P.O. Box 7616  
Schiphol-Oost

Telephone:  
(31-20) 456955

Telex:  
912/13427

**SWEDEN**

Mr. Sten Fransson  
Siemens Data AB  
Pack  
172 07 SUNDBYBERG

Telephone:  
(46-8) 987900

Telex:  
925/17221

**USA**

Mr. Dale Spencer  
Innovative Data Technology  
4060 Morena Blvd.  
San Diego  
California 92117

Telephone:  
714-270-3990

Telex:  
8/259103351610

**USA**

Mr. Bruce Greenfield  
Innovative Data Technology  
P.O. Box 321  
Ramsey  
New Jersey 07446

Telephone:  
201-825-7640

# Have you checked your stock of documentation lately?

THE FOLLOWING CODES ARE USED :

- |  |   |
|--|---|
| * = available through our<br>ordering department | K = only delivered as part of a kit   |
| 1 = in preparation                               | N = non-restricted  |
| 2 = being printed first time                     | P = product related; only available with<br>purchase of associated hardware |
| 3 = being reprinted                              |   |

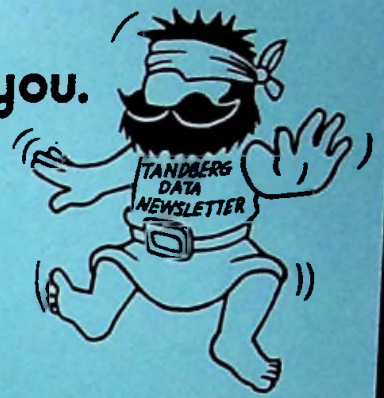
PUBL. REV. NO.	NO.	TITLE	PART NUMBER	CODE
N5041	1	FORMULAR SOFTWARE ERROR REPORT	374051	3
K5131	0	SHIEL.FL.CABL.POL.KEYS MOUNT.INSTR	--	*
P1566	0	TDC 3000 960055 FORMATTER	--	*
K5128	0	TDC 3000 EMC MODIF.KIT MOUNTING INSTR.	386084	*
P1455	0	TDC 3000 OPERATING INSTRUCTIONS	359534	*
P1552	1	TDC 3000 PARALLEL I/O CONTROLLER (960056)	--	*
N5083	1	TDC 3000 PRODUCT SPECS	--	*
K5119	1	TDC 3000 REAR COVER KIT, MOUNTING INSTR.	--	*
N5098	1	TDC 3000 REFERENCE MANUAL	--	*
P1381	0	TDC 3000 SERVICE & OPERATING MANUAL	--	*1
P5093	1	TDC 3000 USED WITH FLUKE 2240A DATA LOGGER	960980	*
P5027	0	TDC 3000/3011 DEMO CARTRIDGE USER'S MANUAL	--	*
N5084	1	TDC 3005 PRODUCT SPECS	--	*
P5065	0	TDC 3005 SUPP.TO 1381 TDC 3000 SERV.OP.MAN	--	*
P5039	1	TDC 3010 USER & SERVICE MANUAL (ALPHA-LSI)	--	*
P5023	0	TDC 3011 DESCR. DISK DUMP/RESTORE PROGR.(HP)	--	*
N5031	0	TDC 3011 DESCR. FOR BCS DRIVER VER.3 (HP)	--	*
P5020	0	TDC 3011 SPECBIN.LOADER/DUMPHP2100(not21MX)	--	*
P5019	0	TDC 3011 SPECS FOR BIN.LOADER/DUMP (HP21MX)	--	*
P5040	1	TDC 3011 USER & SERVICE MAN. (HP2100/21MX)	374719	*
N5076	0	TDC 3011 USER MAN. DOS OPERATING SYSTEM (HP)	--	*
P5024	0	TDC 3011 USER MAN. SIO DRIVER (HP)	--	*
P5018	0	TDC 3011 USER MAN.OPER/HP-RTE FAM.OF OPSYS	--	*
P5017	0	TDC 3011 USERMAN.TEST/MAINT(2100/21MX) +ECN	366968	*1
N5049	1	TDC 3013 SPECS (PDP-11)	--	*
P5028	1	TDC 3013 USER & SERVICE MANUAL (PDP-11)	360971A	*
P5025	0	TDC 3013 USER MAN. RT-11 DRIVER (PDP-11)	--	*
P5047	0	TDC 3013 USER MAN.TEST/MAINT.PROG.(PDP-11)	367198	*
P5048	1	TDC 3013 USERMAN.DISKDUMP/REST.PROG.(PDP-11)	--	*
P5044	1	TDC 3025 SERV.MAN.COMMUN.INTERF.V24 VER.C	--	*
N5060	0	TDC 3025 SPECS COMMUNICATION INTERFACE V24	377012	*
P5125	0	TDC 3025 USER MANUAL, VERSION 2k (TDI)	389683	*
N5085	0	TDC 3050 FORMATTER WITH PARALLEL I/O CONTR.	--	*
P5042	0	TDC 3100 SERVICE MANUAL	--	*
K5012	0	TDF 4050 OPERAT.INSTR.SELF TEST (960768)	--	*
P5037	4	TDF 4050 REFERENCE MANUAL	--	*
P5050	0	TDF 4050 SERVICE AND OPERATING MANUAL	--	*
N5062	0	TDS 8021/24 USER'S GUIDE HASP/JES2	--	*1
N5008	0	TDS 8031 OPERATOR'S GUIDE (IBM 3270 EMUL.)	--	*1
P5009	0	TDS 8031 TECHNICAL OVERVIEW(IBM 3270 EMUL.)	--	*1

PUBL. REV. NO.	NO.	TITLE	PART NUMBER	CODE
			364850	*
			371228	*1
N1513	0	TDV 2100 BINDER, yellow	--	*
N5052	0	TDV 2100 CABLE FASTENING KIT DESCRIPTION	--	*
N5089	0	TDV 2100 CLUSTER INTERFACE HANDLER	--	*
N5106	0	TDV 2100 COBOL VER.2.2 RELEASE DESCRIPTION	374957	*
P5070	1	TDV 2100 CPU	370733	*1
P5067	1	TDV 2100 DEFLECTION & VIDEO ELECTRONICS	372914	*1
P5068	0	TDV 2100 KEYBOARD	389101	*
P5121	0	TDV 2100 POWER SUPPLY MK III	375518	*
P5002	1	TDV 2100 PROM	--	*
N5104	0	TDV 2100 RANDOM FILE MANAGER USER'S GUIDE	--	*
N5101	0	TDV 2100 RELOCATABLE ASSEMBLER & LINKER +APP.	--	*
P5122	0	TDV 2100 SHUGART DISK.DRIVE MAINT. MANUAL	386989	*
N5003	0	TDV 2100 SPECIFICATIONS FOR BUFFERED EDITOR	--	*
N5016	0	TDV 2100 SPECS FOR XMON/P FORM HANDLER	--	*
N5013	0	TDV 2100 SPECS FOR XMON/SV REV.LEVEL 1	--	*
N5061	0	TDV 2100 SPECS TEXT HANDLER	--	*
N5014	0	TDV 2100 SPECS XMON/S & XMON/SD REV.LEV.1	--	*
N5045	0	TDV 2100 SYNCHRONOUS COMMUNICATION DRIVER	--	*
N5053	0	TDV 2100 TCGS - T.CHARACTER GEN. SYST.	--	*
P5120	0	TDV 2100 TD RAM	387420	*
P5082	0	TDV 2100 TECHNICAL UPDATING	370374	*
N5001	0	TDV 2100 TOS 21 VER. 1.5 USER'S GUIDE	--	*
N5109	0	TDV 2100 TOS 21, VER.1.6 REFERENCE CARD	--	*
N5105	1	TDV 2100 TOS 21, VER.1.6 SYSTEM DESCR. +APP.	--	*
N5124	0	TDV 2100 TOS 21, VER.1.7 SYSTEM DESCRIPTION	--	*
N5099	0	TDV 2114 CABLE DESCRIPTION	--	*
P1549	0	TDV 2114 CARTRIDGE CONTROLLER	366006	*
P5079	0	TDV 2114 CLUSTER INTERFACE	372759	2
N5095	0	TDV 2114 COBOL LANGUAGE MANUAL	--	*
N5096	0	TDV 2114 COBOL REFERENCE CARD	--	*
N5091	0	TDV 2114 COMMERCIAL BASIC REFERENCE CARD	--	*
N5090	0	TDV 2114 COMMERCIAL BASIC USER MANUAL	--	*
P5056	1	TDV 2114 DESCR. OF TEST PROGRAMS (960680)	--	*
P1426	0	TDV 2114 DISKETTE CONTROLLER	362845	*
P5069	1	TDV 2114 DISPLAY LOGIC	374095	*
K5132	0	TDV 2114 EMC MOD.KIT EXT.DISKDR.MOUNT.INSTR	387765	*
K5133	0	TDV 2114 EMC MODIFICATION KIT MOUNT. INSTR.	386156	*
N5026	1	TDV 2114 FORM HANDLER VER. 1.2 (see 5016)	--	*
P5057	0	TDV 2114 HORIZONTAL MOUNTING OF DISK. DRIVE	--	*
P5116	0	TDV 2114 ILLUSTRATED PARTS LIST	385423	*
P5036	0	TDV 2114 INITIAL SETTING UP	367738	*
P5035	0	TDV 2114 INSTALLATION	366330	*
P5123	0	TDV 2114 LCG BOARD (1 skjema)	389173	*1
P5077	0	TDV 2114 LOCATION & INTERCONNECTION	374792	*
N5033	0	TDV 2114 OPERATING INSTRUCTIONS (PRELIM.)	368399	*
N5108	0	TDV 2114 PROGRAMMER'S REFERENCE GUIDE	--	*
P5097	1	TDV 2114 REF.MANUAL DOUBLE DENSITY MARK I	--	*
N5058	0	TDV 2114 RELEASE DESCR. COBOL 960811.000 (App.to 5095)	--	*
P4997	0	TDV 2114 SERV. & OPERATING MANUAL (3 BOOKS)	960705	*
P5126	0	TDV 2114 SHIELDED FLAT CABLE MOUNTING INSTR.	389798	*
P5080	1	TDV 2114 SYNCHRONOUS INTERFACE	373190	*
P5087	0	TDV 2114 SYSTEM DESCRIPTION	373111	*1
N5015	0	TDV 2114 USER DOCUMENTATION FOR SORT	--	*
P5092	0	TDV 2115 ADAPT.CABLE TDV 2000 COMP.TDV 2115	--	*
P5055	0	TDV 2115 DISPLAY CONTROLLER	371372	*
P5114	0	TDV 2115C USER'S GUIDE (PRELIMINARY)	375827	*1
P5118	0	TDV 2115L USER'S GUIDE	388577	2
N5100	0	TDV 2115/16 CABLE DESCRIPTION	--	*
P5064	0	TDV 2115/16 LOCATION AND INTERCONNECTION	--	*
N5032	1	TDV 2115/16 PRELIM.GUIDE,ref.5114,5118 etc.	371085	*1
P4998	0	TDV 2115/16 SERVICE & OPERATING MANUAL	365741	*1
			960763	*

Give  
Keep



Give the Newsletter a chance of reaching you.  
Keep us informed!



Please note the following change of address :

Name : \_\_\_\_\_  
Company : \_\_\_\_\_  
Old address : \_\_\_\_\_  
\_\_\_\_\_  
New address : \_\_\_\_\_  
\_\_\_\_\_



Please include me on the mailing list  
for future issues of Tandberg Data Newsletter :

Name : \_\_\_\_\_  
Company : \_\_\_\_\_  
Address : \_\_\_\_\_  
\_\_\_\_\_



TANDBERG DATA A/S  
P.O. Box 9 Korsvoll  
OSLO 8, NORWAY

Att.: Documentation and Information Group (DIG)

Season Greetings  
and all the best  
wishes for 1980!

**Editorial staff**

Per Kr. Fossum  
Anne Beth Bø  
Sigurd Humerfelt  
Frank Andersen  
Sissel Bakke



**TANDBERG DATA**

Documentation and Information Group  
(DIG)

© 1979 TANDBERG DATA A/S

TANDBERG DATA A/S  
P.O. Box 9 Korsvoll  
OSLO 8, NORWAY

Phone (47-2) 23 20 80  
Telex 17002 tdata n